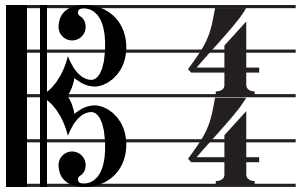


Rhythm & Time Signature

Time Signature



TOP NUMBER IS THE NUMBER OF BEATS PER MEASURE

BOTTOM NUMBER DETERMINES WHAT NOTE VALUE GETS BEAT

Rhythm

Name	Note	Beats	Rest
Whole Note		4 Beats	
Half Note		2 Beats	
Quarter Note		1 Beat	
Eighth Note		1/2 Beat	
Sixteenth Note		1/4 Beat	

